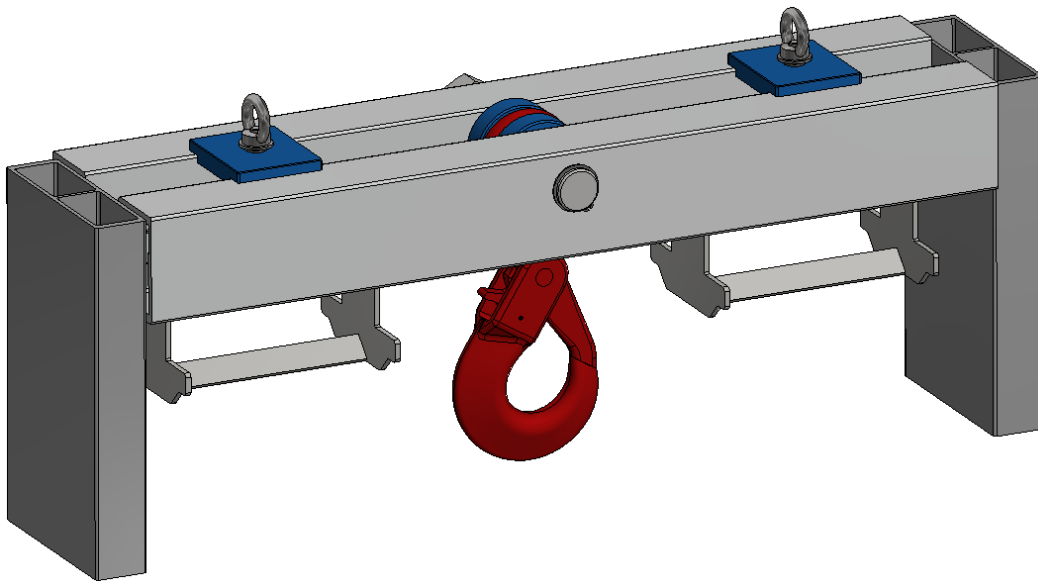


Aluminium Fork Mounted Hook

Example documentation



USER INFORMATION

The assembly, operating and maintenance instructions for SCHILLING products must be observed at all times. Users and/or their personnel must read the instructions thoroughly and understand them fully before using the product.

Please retain this user information for future reference!



Contents

1. INTRODUCTION	1
1.1 MANUFACTURER.....	1
1.2 TERMS AND CONDITIONS	1
2. PRESENTATION OF INFORMATION	2
2.1 SYMBOLS AND TERMINOLOGY	2
2.2 INSTRUCTIONS FOR USE AND ENUMERATIONS.....	2
3. EC DECLARATION OF CONFORMITY	3
4. SAFETY	4
4.1 GENERAL SAFETY NOTES	4
4.2 APPROVED USE	5
4.3 NON APPROVED USE	5
5. TECHNICAL DATA.....	6
6. GENERAL DATA	7
7. DELIVERY AND TRANSPORT	8
7.1 SCOPE OF DELIVERY.....	8
7.2 TRANSPORTATION	8
7.3 STORAGE	8
8. OVERVIEW OF INDIVIDUAL COMPONENTS OF THE ALUMINIUM FORK MOUNTED HOOK	9
9. ASSEMBLY	10
10. PUTTING INTO OPERATION	13
10.1 COMPULSORY PRIOR INSPECTION AND TESTING	13
10.2 VISUAL INSPECTION, FUNCTION TEST	13
11. OPERATION	14
12. MAINTENANCE.....	15
12.1 MAINTENANCE PLAN.....	15
12.2 VISUAL INSPECTION, FUNCTION TESTING AND STRESS TESTING	15
12.3 INSPECTION REPORT / REPEAT INSPECTION	16
13. DISASSEMBLING AND DISPOSAL.....	19
13.1 DISASSEMBLY	19
13.2 DISPOSAL	19
13.3 DISPOSAL OF PACKAGING MATERIAL	19
14. SERVICE.....	20
14.1 CONTACT.....	20
14.2 SPARE PARTS ORDERING OR REORDERING PROCESS.....	20

1. Introduction

- ▲ The Aluminium Fork Mounted Hook is used for lifting, lowering and moving loads of suitable size by using a forklift.
- ▲ This user information constitutes an integral part of the product and an element of the overriding risk assessment and handling instructions to be taken into account whenever lifting or handling loads.
- ▲ The user information must be available to all users.
- ▲ Please read this user information thoroughly before using the Aluminium Fork Mounted Hook.
- ▲ This user information explains how to safely assemble, operate, maintain, repair, disassemble and dispose of the Aluminium Fork Mounted Hook.
- ▲ In addition to this user information, you must also observe and comply with all applicable occupational health and safety regulations of the country and the environment in which the Aluminium Fork Mounted Hook is used as well as all other general regulations and rules regarding safe and appropriate use.
- ▲ Images and illustrations in this user information may differ from the actual product which will be supplied.
- ▲ Unauthorized modifications of the Aluminium Fork Mounted Hook or self-made auxiliary equipment are prohibited.

1.1 Manufacturer



1.2 Terms and Conditions

- ▲ In the event of direct sales transactions, the General Terms and Conditions can be obtained from the manufacturer or from their website.
- ▲ If you have purchased your device from an intermediary, please ask your distributor/salesperson.




2. Presentation of information

This user information uses symbols, terminology, instructions for use and enumerations as described in Chapters 2.1 to 2.2 below.

2.1 Symbols and terminology

Safety notes

Safety notes are categorised and presented as follows:

 HAZARD
A safety note designated as a "HAZARD" indicates a risk which will directly and with certainty lead to death or severe, permanent personal injury.
 WARNING
A safety note designated as a "WARNING" indicates a risk which may lead to severe personal injury or death.
 CAUTION
A safety note designated as a "CAUTION" indicates a risk which may lead to minor to moderate personal injury.
NOTE
A safety note designated as a "NOTE" indicates a risk which may lead to material damage.

Useful information and tips



INFO

This symbol indicates useful information and tips.

Disposal



INFORMATION FOR DISPOSAL

of packaging materials, lifting devices, etc.

2.2 Instructions for use and enumerations

All instructions for use are presented in chronological order and numbered, e.g.:

1. Step 1

2. Step 2

Outcomes of actions are indicated by an arrow:

➤ Outcome or device response

Instructions for use which do not have to be carried out in a particular sequence are indicated as follows:

▪ Step

▪ Step

Outcomes of actions are indicated by an arrow:

➤ Outcome or device response

Enumerations are indicated by indents:

- Enumeration

3. EC Declaration of Conformity

EC Declaration of Conformity

Pursuant to the EC Machinery Directive 2006/42/EC, Appendix II A

We hereby declare that the below mentioned machine complies with the general health and safety requirements of EC Directive 2006/42/EC in terms of its design and construction and in the version marketed by us.

This declaration shall become invalid in the event of modifications to the machine without our prior approval.

Manufacturer:



Description and identification of the machine:

- Function: Aluminium Fork Mounted Hook for lifting of loads, 1500 kg, 3000 kg, 6300 kg
- Type/Model: Aluminium Fork Mounted Hook for forklifts.
- Item number: 51150
51300
51630
- Serial number: **Example documentaiton**
- Year of manufacture: 2021

Applied harmonised standards, in particular:

- DIN EN 13001-1:2015-06 – Cranes – General design – Part 1: General principles and requirements
- DIN EN 13001-2:2014-12 – Cranes – General design – T2 Load actions
- DIN EN 15011:2014-09 – Cranes – Bridge and Gantry Cranes
- DIN EN 1999-1-1:2014-03 – Design of aluminium structures – General structural rules

Applied national standards and technical specifications, in particular:

- DGUV Vorschrift (regulations) 52 (BGV D6) – UVV Krane (Cranes)

Information about the authorised signatory:


- Martin Schilling, Ernst-Zimmermann-Strasse 9-11, 88045 Friedrichshafen, Germany
(Business owner)

Date:
01.02.2021

Signature:

4. Safety

Please read the safety instructions below thoroughly before putting the product into operation.

Chapters 4.1 to 4.3 set out general rules of conduct to be adhered to when handling the product. Instructions in the following chapters highlighted with a  symbol must be followed in order to avoid putting persons and materials at risk. Safety notes pertaining to individual instructions for use are listed before the relevant step and must be observed.

4.1 General safety notes

- Read this user information in full.
- Observe the safety notes.
- Ensure that this user information is available at the site of operation at all times.
- The product must be operated by suitably qualified personnel (see Tab. 1) only.
- In addition to this user information, you must also observe and comply with all applicable occupational health and safety regulations of the relevant country and environment in which the product is used, as well as other general regulations for safe and appropriate use.
- Any damage compromising safety must be repaired immediately.
- Perform all work prudently.
- Never open a lifting device when loaded.
- Never stand/walk below the suspended load.

Qualifications required for handling lifting devices

<i>Field of activity</i>	<i>Qualification</i>	<i>Specialist knowledge</i>
<i>Delivery and transport</i>	<i>Dealer, freight carrier</i>	<ul style="list-style-type: none"> – Evidence of load safety induction – Safe handling of lifting devices
<i>Storage</i>	<i>Warehouse staff</i>	<ul style="list-style-type: none"> – Safe handling of lifting devices
<i>Assembly, commissioning, maintenance, repair and disassembly</i>	<i>Qualified personnel</i>	<ul style="list-style-type: none"> – Expert: technical training and expertise, sufficient knowledge about lifting devices – Safe handling of lifting devices – Product-specific knowledge
<i>Operation, simple visual inspection</i>	<i>Qualified personnel</i>	<ul style="list-style-type: none"> – Safe handling of lifting devices, technical training and expertise
<i>Disposal</i>	<i>Qualified personnel</i>	<ul style="list-style-type: none"> – Knowledge about the regulations for correct disposal and recycling

Tab. 1: Overview

4.2 Approved use

- The lifting, lowering and moving loads of suitable size by using a forklift.
- The stated load capacity must be observed
- Temperature ranges from -20° to +50°C
- Wind speeds of up to < 40 km/h

4.3 Non approved use

- Exceeding the maximum load capacity
- Structural modifications of the product
- Standing/walking below the suspended load
- Pulling a load diagonally
- Forcefully freeing loads that are stuck
- Dragging loads along the ground
- Transporting persons and animals

No guarantee is provided for the completeness of Chapter 4.3.

Anything that is not explicitly permitted is classified as non approved use.

5. Technical data

Item number	51150	51300	51630
Load capacity	1500 kg	3000 kg	6300 kg
Fork profile (max.)	240 x 115 mm	240 x 115 mm	240 x 115 mm
Outer fork dimension (max.)	972 mm	972 mm	972 mm

6. General data

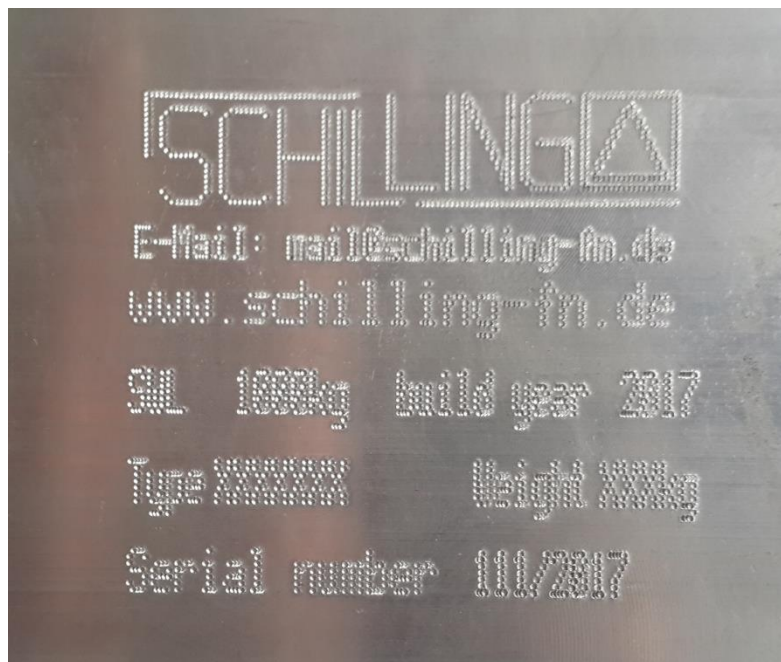
The following data is engraved on the individual components of the Product:

A: Load capacity
C: Type
E: Serial number

B: Year of manufacture
D: Total weight

Example of a SCHILLING engraving:

A: >
C: >
E: >



< B:
< D:
< E:

7. Delivery and transport

7.1 Scope of delivery

Immediately check the delivery for completeness against the enclosed delivery note.

You may also use the overview of the product and the parts list in order to verify the completeness of the delivery (see Chapter 8).

If parts are missing, please contact your supplier immediately.

If notified late, especially if the product has already been used, we cannot accept any claims for after supply.

7.2 Transportation

The product is checked and adequately packaged prior to delivery.

NOTE

Damage to the device

Incorrect transportation may damage the product.

- Always transport the product as intended.
- Use a suitable means of transport.
- Make sure that the product is adequately secured during transportation.

7.3 Storage

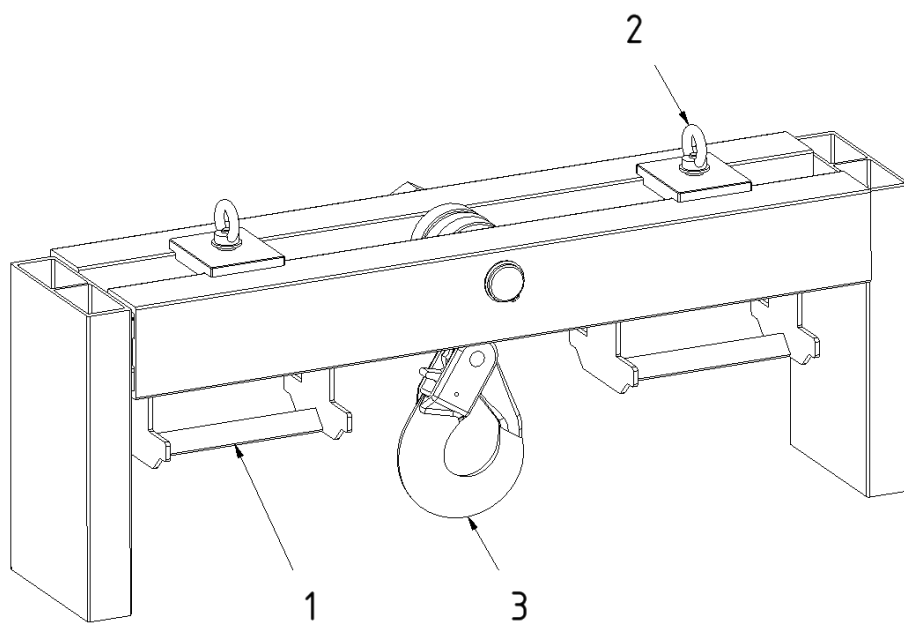
NOTE

Damage to the device

Incorrect storage may damage the product.

- Always store the product as intended.
- Store the product in a clean and dry place.
- Protect the product from:
 - constant humidity or outdoor storage
 - contamination
 - damage
 - corrosion

8. Overview of individual components of the Aluminium Fork Mounted Hook



Parts List:

Item	Name	Quantity
1	Forklift shoe	2
2	Eyebolt	2
3	Safety load hook	1

9. Assembly

⚠ CAUTION

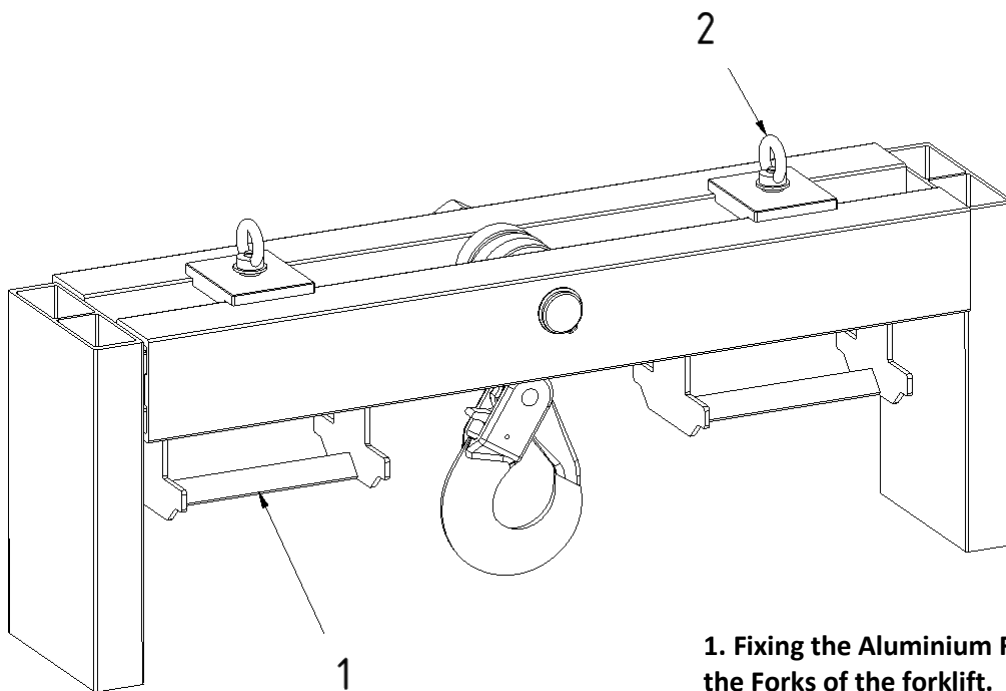
The Aluminium Fork Mounted Hook has pinching points which may cause injuries.

- Perform all assembly work prudently and cautiously.



INFO

The Aluminium Fork Mounted Hook will be delivered fully mounted.



1. Fixing the Aluminium Fork Mounted Hook to the Forks of the forklift.

1.1.

Adjust the spacing of the forklift shoes (1) to the width of the forklift forks by loosening the 2 eyebolts (2) and moving the forklift shoes (1).

1.2.

Drive the forklift at an adjusted speed into the forklift shoes (1) of the Aluminium Fork Mounted Hook.

1.3.

Fix the Aluminium Fork Mounted Hook on the forks of the forklift by tightening the 2 eyebolts (2).

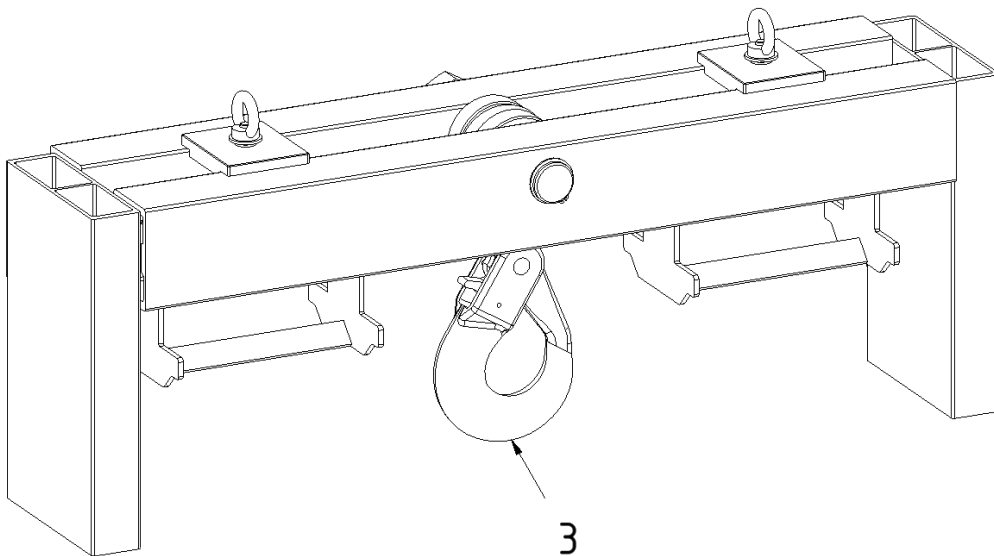
1.4.

Check that the Aluminium Fork Mounted Hook fits on the forks of the forklift.

⚠CAUTION

The Aluminium Fork Mounted Hook has pinching points which may cause injuries.

- Perform the pushing and attaching of the load prudently and cautiously.



2. Attaching the load to the Aluminium Fork Mounted Hook

2.1.

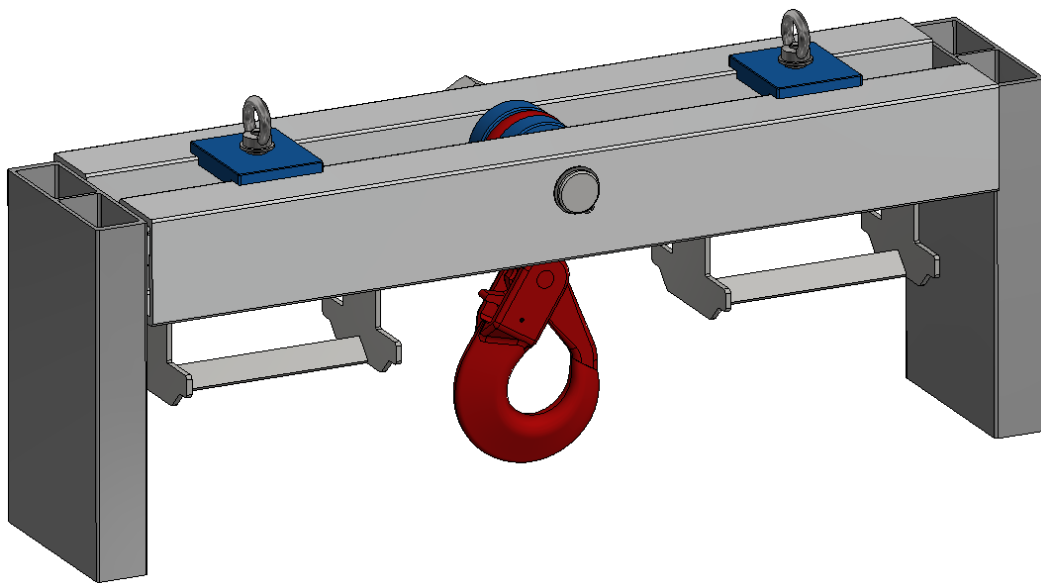
Attach the load at the safety load hook (3).

2.2.

Slightly lift the Aluminium Fork Mounted Hook with the attached load.

2.3.

Check the fit of the load on the safety load hook (3).



➤ The Aluminium Fork Mounted Hook is delivered already completely assembled.

10. Putting into operation

10.1 Compulsory prior inspection and testing

Inspection and testing of the Aluminium Fork Mounted Hook is required prior to commissioning in order to ensure that the Aluminium Fork Mounted Hook is in perfect working order and ready for its intended use.

WARNING

Without prior inspection and testing, injuries may occur during commissioning.
Inspect and the Aluminium Fork Mounted Hook as follows:

- Visual inspection
- Function test

10.2 Visual inspection, function test

Visual inspection

The Aluminium Fork Mounted Hook must be inspected every time before putting it back into operation.

CAUTION

The Aluminium Fork Mounted Hook has pinching points which may cause injuries.

- Perform all inspections and testing of the Aluminium Fork Mounted Hook prudently and cautiously.

1. Terminate operation in the event of faults. Faults must be eliminated by qualified personnel.

Function test

The Aluminium Fork Mounted Hook must be tested every time before putting it back into operation.

WARNING

Loads may fall in the event of deformation and wear of individual components.

- Take the Aluminium Fork Mounted Hook out of operation immediately.
- Have the device inspected and tested by a qualified expert.

1. Verify to what extent the individual components are still functional.
2. If in doubt, replace individual components.
3. Verify that all movable parts are able to move freely.
4. Replace parts which do not move freely.
5. Put the Aluminium Fork Mounted Hook out of operation if no longer functional or damaged beyond repair.
6. Dispose of the individual material components (see Chapter 13).

11. Operation

The Aluminium Fork Mounted Hook can be used as intended once it has been properly assembled and put into operation.

CAUTION

The Aluminium Fork Mounted Hook has pinching points which may cause injuries.

- Operate the Aluminium Fork Mounted Hook prudently and carefully.

WARNING

Various hazards may occur in connection with the Aluminium Fork Mounted Hook.

- The Aluminium Fork Mounted Hook may only be mounted on the two matching forks of a forklift.
- If the fixing of the Aluminium Fork Mounted Hook at the lifting forks of the forklift is not firm, the entire Aluminium Fork Mounted Hook can slip off the forklift.
- The load can slip if the Aluminium Fork Mounted Hook is extremely inclined.
- If the load is not correctly hooked onto the Aluminium Fork Mounted Hook, the load may fall.
- Dangerous situations can occur when the load swings through the movement. Prevent the load from swinging.
- The load must not touch the ground when moving with the forklift so that no horizontal forces act on the Aluminium Fork Mounted Hook.
- If cracks are detected in welding seams, a load-bearing part may break, causing the load to fall and people to be seriously injured.

DANGER

Never work below a load on Aluminium Fork Mounted Hook.

- Never stand/walk below the suspended load

The Aluminium Fork Mounted Hook is used for lifting, lowering and moving loads of suitable size by using a forklift.

12. Maintenance

The product is essentially maintenance free.

12.1 Maintenance plan

Maintenance date	Action
Prior to putting into operation	- Visual inspection and function testing by qualified personnel
Prior to each subsequent operation, after initial putting into operation without any prior extraordinary incidents	- Visual inspection by qualified personnel
Annually	- Visual inspection, function testing and stress test performed by a qualified expert

12.2 Visual inspection, function testing and stress testing

Visual inspection

See Chapter 10.2

Function testing

See Chapter 10.2

Stress testing according to the relevant guidelines

The product must be subjected to stress tests at least once a year, and immediately in the event of modifications or repairs.

WARNING

Operators of the product are required to comply with statutory regulations.

- Have the device professionally inspected by a qualified expert (see Chapter 12.3)

1. Operators of the product must ensure that the product is inspected by a qualified expert at least once a year and that any faults identified during these inspections are eliminated immediately.
2. (Where applicable) The guidelines of the DGUV Vorschrift (regulations) 52 (BGV D6) – UVV Krane (cranes), must be observed.

12.3 Inspection report / repeat inspection

Product: **Aluminium Fork Mounted Hook**
Manufacturer: SCHILLING Kran- und Hebetechnik, – www.schilling-fn.de
Year of manufacture: 2021

Please check the engraving on the product for the item number, load capacity, serial number and net weight of the device.

- 1) Inspection prior to delivery.
Visual inspection and function testing of the product
and its components have been performed.
The product has been developed, constructed and built
in accordance with the rules of engineering.

Date: Date of dispatch (see delivery note)

Owner's/Manufacturer's signature

- 2) Repeat inspection
Inspection has been performed

Date:

Signature of the qualified expert

- 3) Repeat inspection
Inspection has been performed

Date:

Signature of the qualified expert

- 4) Note
Inspection has been performed

Date:

Signature of the qualified expert

Next inspection: 1 year after delivery (at the latest)

Product: Aluminium Fork Mounted Hook
Manufacturer: SCHILLING Kran- und Hebetechnik, – www.schilling-fn.de
Year of manufacture: 2021

Please check the engraving on the product for the item number, load capacity, serial number and net weight of the device.

Findings / drawing					
Known faults have been fixed by -us / -the company. Date and signature of the operations manager:					
There is -no- reason to object to continued operation. Re-inspection is -not- required. Date and inspector's signature:					
Acknowledged. Date and signature of the operations manager:					
Participants:	Yes	No	Inspection according to Art.	Yes	No
Rating plate:	Yes	No	Inspection badge:		
Last inspection:			Next inspection:		
Short statistics created:					

Remark	Inspector's name and company
Repeat inspection has been performed. – No') – faults identified – see Inspection report') Sheet no. _____	_____ (Date Signature)
Repeat inspection has been performed. – No') – faults identified – see Inspection report') Sheet no. _____	_____ (Date Signature)
Repeat inspection has been performed. – No') – faults identified – see Inspection report') Sheet no. _____	_____ (Date Signature)
Repeat inspection has been performed. – No') – faults identified – see Inspection report') Sheet no. _____	_____ (Date Signature)
Repeat inspection has been performed. – No') – faults identified – see Inspection report') Sheet no. _____	_____ (Date Signature)
Repeat inspection has been performed. – No') – faults identified – see Inspection report') Sheet no. _____	_____ (Date Signature)
') please delete if not applicable	

13. Disassembling and Disposal

As manufacturers, we are required by law to inform you not to dispose of the product as unsorted waste. Dispose of it separately via collection and return points for industrial and commercial waste. The product must therefore be disassembled into its individual components.

13.1 Disassembly

CAUTION

Disassembly of the product on unstable surfaces or by means of unsuitable tools may result in injuries.

1. The assembled product is disassembled in the reverse order to that described in Chapter 9.
2. The individual assemblies of the product must then be disassembled by means of a suitable tool.

13.2 Disposal



INFORMATION FOR DISPOSAL

If the product is no longer functional or cannot be repaired, it must be disposed of in accordance with the applicable regulations.

The product consists of several different material components which must be disposed of separately:

1. Dispose of aluminium components as scrap aluminium.
2. Dispose of metal components as scrap metal.
3. Dispose of plastic components as scrap plastic.
4. Dispose of electrical components as electrical scrap (when using an electrical chain hoist).

13.3 Disposal of packaging material



INFORMATION FOR DISPOSAL

Packaging material must be correctly disposed of or recycled.

14. Service

14.1 Contact

For service matters or all other enquiries, please contact your supplier.

14.2 Spare parts ordering or reordering process

**INFO**

Please use the overview and table in Chapter 8 for better identification of the required component and submit this to your supplier.

1. Determine the serial number of your product. The serial number can be found in this user Information in Chapter 3. The serial number is also engraved on the product.
2. Determine the year of manufacture of the product. The year of manufacture can be found in this user information in Chapter 3. The year of manufacture is also engraved on the product.
3. Use the overview in Chapter 8 and highlight the component or assembly in question.
4. Then contact your supplier directly, submitting the collected data and any other details.