



Grade 80 Toebehoren volgens EN 1677 / Grade 80 Accessories according to EN 1677

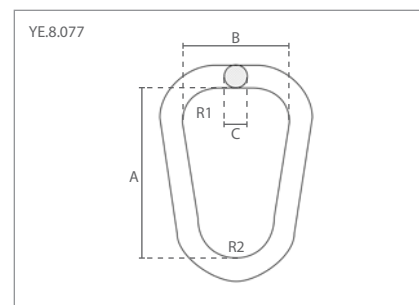
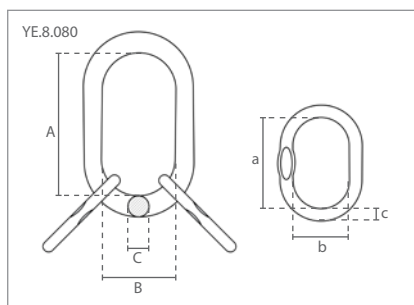
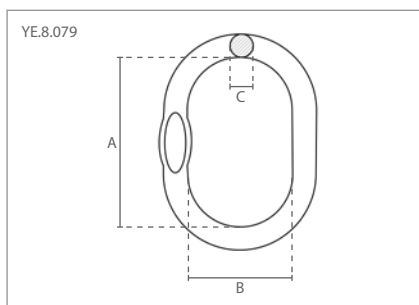
1. Topschaklen /
Master links



2. Topschaklen met verloopringen /
Master link assemblies



3. Kraanschaklen /
Crane links



1 Specificaties / Specifications			Afmetingen / Dimensions (mm)		
Artikel nummer	Capaciteit / Capacity	Gewicht / Weight	A	B	C
Article code	ton	kg			
YE.8.079.07-06	1.60	0.4	110	60	13
YE.8.079.08-07	2.12	0.6	110	60	16
YE.8.079.10-08	3.15	0.8	135	75	18
YE.8.079.13-10	5.30	1.5	160	90	22
YE.8.079.16-13	8.00	2.3	180	100	26
YE.8.079.18-16	11.20	4.0	200	110	32
YE.8.079.20-18	14.00	6.4	260	140	36
YE.8.079.22-20	17.00	9.0	300	160	40
YE.8.079.26-22	21.20	12.8	340	180	45
YE.8.079.32-26	31.50	16.6	350	190	50
YE.8.079.36-32	45.00	23.3	400	200	56
YE.8.079.40-36	56.00	32.0	430	220	63
YE.8.079.72	63.00	45.8	460	250	72

2 Specificaties / Specifications			Afmetingen / Dimensions (mm)					
Artikel nummer	Capaciteit / Capacity	Gewicht / Weight	A	B	C	a	b	c
Article code	ton	kg						
YE.8.080.07	3.15	1.3	135	75	18	60	38	13
YE.8.080.08	4.25	2.2	160	90	22	70	34	16
YE.8.080.10	6.70	3.4	180	100	26	85	40	18
YE.8.080.13	11.20	6.1	200	110	32	115	50	22
YE.8.080.16	17.00	10.0	260	140	36	140	65	26
YE.8.080.20	26.50	22.6	350	190	50	180	100	32
YE.8.080.22	31.50	25.2	350	190	50	180	100	36
YE.8.080.26	45.00	34.6	400	200	56	180	100	40
YE.8.080.32	63.00	66.5	460	250	72	200	110	50

3 Specificaties / Specifications			Afmetingen / Dimensions (mm)				
Artikel nummer	Capaciteit / Capacity	Gewicht / Weight	A	B	C	R1	R2
Article code	ton	kg					
YE.8.077.22.04	4.00	2.2	240	150	22	45	50
YE.8.077.25.05	5.00	2.8	280	175	25	52	60
YE.8.077.32.08	8.00	5.4	320	215	32	70	70
YE.8.077.32.09	9.00	7.8	280	175	32	52	60
YE.8.077.38.15	15.00	6.2	280	175	38	52	60
YE.8.077.45.20	20.00	12.7	320	215	45	70	70

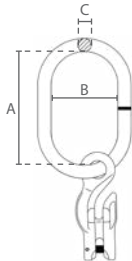


Grade 80 Toebehoren volgens EN 1677 / Grade 80 Accessories according to EN 1677

4. Topschalmen met inkorthaak / Master links with grab hook



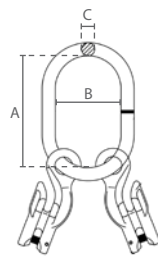
YE.8.050



5. Topschalmen met inkorthaken / Master links with grab hooks



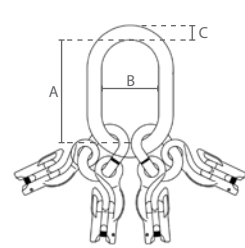
YE.8.051



6. Topschalmen met inkorthaken / Master links with grab hooks



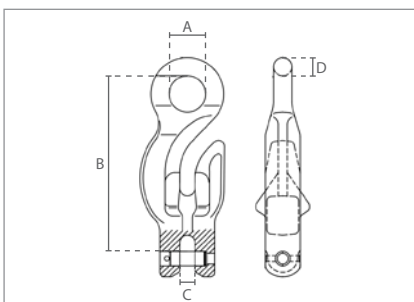
YE.8.052



4 Specificaties / Specifications			Afmetingen / Dimensions (mm)		
Artikel nummer	Capaciteit / Capacity	Gewicht / Weight	A	B	C
Article code	ton	kg			
YE.8.050.06	1.12	0.7	110	60	13
YE.8.050.08	2.00	1.1	120	70	14
YE.8.050.10	3.15	2.1	140	80	17
YE.8.050.13	5.30	3.9	160	95	22
YE.8.050.16	8.00	6.8	190	110	25
YE.8.050.20	12.50	13.5	230	130	32

5 Specificaties / Specifications			Afmetingen / Dimensions (mm)		
Artikel nummer	Capaciteit / Capacity	Gewicht / Weight	A	B	C
Article code	ton	kg			
YE.8.051.06	1.60	1.1	120	70	14
YE.8.051.08	2.80	2.2	140	80	17
YE.8.051.10	4.20	4.4	160	95	22
YE.8.051.13	7.50	7.4	190	110	25
YE.8.051.16	11.20	12.6	230	130	32

6 Specificaties / Specifications			Afmetingen / Dimensions (mm)		
Artikel nummer	Capaciteit / Capacity	Gewicht / Weight	A	B	C
Article code	ton	kg			
YE.8.052.06	2.35	2.6	135	75	19
YE.8.052.08	4.25	5.2	160	90	23
YE.8.052.10	6.70	9.4	180	100	27
YE.8.052.13	11.20	16.7	200	110	33
YE.8.052.16	17.00	26.4	260	140	36



Specificaties / Specifications		Afmetingen / Dimensions (mm)			
Capaciteit / Capacity	Gewicht / Weight	A	B	C	D
ton	kg				
1.12	0.3	18	88	8	9
2.00	0.7	24	116	12	12
3.15	1.4	30	145	12	15
5.30	2.4	37	178	15	18
8.00	4.5	45	216	19	22
12.50	9.0	58	278	24	28

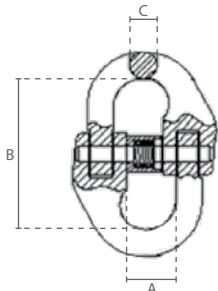


Grade 80 Toebehoren volgens EN 1677 / Grade 80 Accessories according to EN 1677

7. Verbindingschalen /
Connecting links



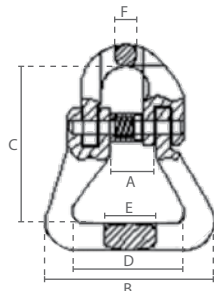
YE.8.015



8. Verbindingschalen voor
rondstroppen /
Connecting links for
round slings



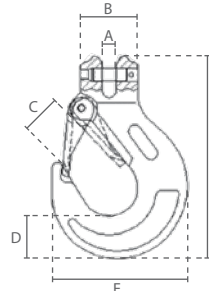
YE.8.016



9. Gaffelhaken met klep /
Clevis hooks with latch



YE.8.043



7 Specificaties / Specifications			Afmetingen / Dimensions (mm)		
Artikel nummer	Capaciteit / Capacity	Gewicht / Weight	A	B	C
Article code	ton	kg			
YE.8.015.06	1.12	0.08	15	42	8
YE.8.015.07	1.50	0.15	19	55	9
YE.8.015.08	2.00	0.16	20	61	10
YE.8.015.10	3.15	0.3	25	68	12
YE.8.015.13	5.30	0.7	29	87	15
YE.8.015.16	8.00	1.2	35	109	20
YE.8.015.20	12.50	2.1	41	122	24
YE.8.015.22	15.00	2.9	48	142	26
YE.8.015.26	21.20	4.5	58	158	31
YE.8.015.32	31.50	8.2	67	205	38

8 Specificaties / Specifications			Afmetingen / Dimensions (mm)				
Artikel nummer	Capaciteit / Capacity	Gewicht / Weight	A	B	C	D	E
Article code	ton	kg					F
YE.8.016.06	1.12	0.2	15	60	56	40	18
YE.8.016.08	2.00	0.3	20	62	64	40	24
YE.8.016.10	3.15	0.7	24	66	83	39	31
YE.8.016.13	5.30	1.5	28	88	94	55	37
YE.8.016.16	8.00	2.3	35	108	120	66	46
YE.8.016.20	12.50	3.3	41	129	138	80	52
YE.8.016.26	21.20	10.7	58	229	210	152	86
YE.8.016.32	31.50	18.9	73	252	279	160	91

9 Specificaties / Specifications			Afmetingen / Dimensions (mm)				
Artikel nummer	Capaciteit / Capacity	Gewicht / Weight	A	B	C	D	E
Article code	ton	kg					F
YE.8.043.06	1.12	0.4	8	32	20	20	68
YE.8.043.08	2.00	0.6	10	39	24	25	86
YE.8.043.10	3.15	1.0	13	48	28	36	106
YE.8.043.13	5.30	1.5	17	55	35	42	130
YE.8.043.16	8.00	3.5	19	66	43	47	156
YE.8.043.20	12.50	6.8	24	92	52	51	180
YE.8.043.22	15.00	10.0	27	91	70	63	220
YE.8.043.26	21.20	15.0	30	117	85	75	252
YE.8.043.32	31.50	27.0	35	150	106	88	300



Grade 80 Toebehoren volgens EN 1677 / Grade 80 Accessories according to EN 1677

10. Ooghaken met klep /
Eye hooks with latch



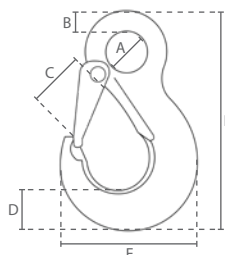
11. Wartel haken met klep /
Swivel hooks with latch
(Onbelast wartelen / Swivel without load)



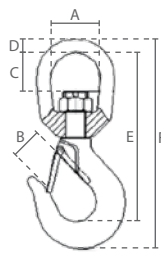
12. Wartel haken met klep
en lager /
Swivel hooks with latch
and bearing
(Belast wartelen / Swivel with load)



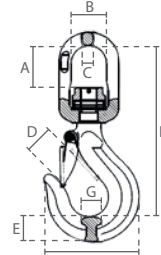
YE.8.044



YE.8.087



YE.8.088



10 Specificaties / Specifications			Afmetingen / Dimensions (mm)					
Artikel nummer	Capaciteit / Capacity	Gewicht / Weight	A	B	C	D	E	F
Article code	ton	kg						
YE.8.044.06	1.12	0.3	21	9	19	20	68	109
YE.8.044.08	2.00	0.6	25	11	22	27	84	134
YE.8.044.10	3.15	1.1	34	14	28	33	103	168
YE.8.044.13	5.30	1.8	43	18	35	40	129	208
YE.8.044.16	8.00	3.2	52	22	43	48	157	253
YE.8.044.20	12.50	5.3	62	26	52	56	187	300

11 Specificaties / Specifications			Afmetingen / Dimensions (mm)					
Artikel nummer	Capaciteit / Capacity	Gewicht / Weight	A	B	C	D	E	F
Article code	ton	kg						
YE.8.087.06	1.12	0.4	32	22	17	9	109	137
YE.8.087.08	2.00	1.1	42	22	35	16	150	192
YE.8.087.10	3.15	1.3	43	26	35	16	163	209
YE.8.087.13	5.30	3.6	48	33	39	18	191	246
YE.8.087.16	8.00	4.7	62	43	53	25	244	313
YE.8.087.20	12.50	7.4	68	50	51	29	277	364
YE.8.087.22	15.00	10.6	79	55	65	32	332	431
YE.8.087.26	21.20	21.4	105	81	114	40	430	546
YE.8.087.32	31.50	32.0	105	100	100	40	466	596

12 Specificaties / Specifications			Afmetingen / Dimensions (mm)							
Artikel nummer	Capaciteit / Capacity	Gewicht / Weight	A	B	C	D	E	F	G	H
Article code	ton	kg								
YE.8.088.06	1.12	0.7	30	33	11	25	20	69	16	136
YE.8.088.08	2.00	1.0	42	36	13	29	23	88	20	170
YE.8.088.10	3.15	1.7	50	42	16	31	30	105	23	205
YE.8.088.13	5.30	3.0	58	50	17	44	38	135	32	242
YE.8.088.16	8.00	5.3	64	61	22	45	46	161	38	292
YE.8.088.20	12.50	9.5	86	74	25	56	50	192	49	356



Grade 80 Toebehoren volgens EN 1677 / Grade 80 Accessories according to EN 1677

13. Veiligheids gaffelhaken /
Self-locking clevis hooks



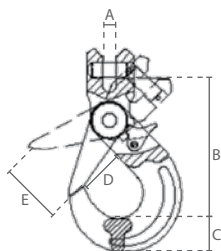
14. Veiligheids gaffelhaken
met grip /
Self-locking clevis hooks
with grip



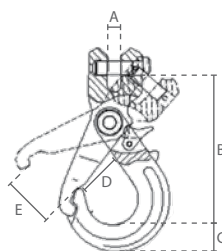
15. Veiligheids ooghaken /
Self-locking eye hooks



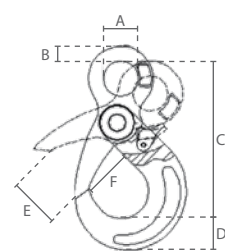
YE.8.085



YE.8.085



YE.8.025



13 Specificaties / Specifications			Afmetingen / Dimensions (mm)				
Artikel nummer	Capaciteit / Capacity	Gewicht / Weight	A	B	C	D	E
Article code	ton	kg					
YE.8.085.06	1.12	0.5	9	96	20	28	35
YE.8.085.20	12.50	7.5	25	240	55	86	80
YE.8.085.22	15.00	11.5	26	277	67	76	83
YE.8.085.26	21.20	18.5	30	311	75	96	106
YE.8.085.32	31.50	49.1	36	401	97	135	140

14 Specificaties / Specifications			Afmetingen / Dimensions (mm)				
Artikel nummer	Capaciteit / Capacity	Gewicht / Weight	A	B	C	D	E
Article code	ton	kg					
YE.8.085.08	2.00	0.8	10	121	24	36	40
YE.8.085.10	3.15	1.5	12	146	30	45	50
YE.8.085.13	5.30	2.8	15	182	40	53	60
YE.8.085.16	8.00	5.6	18	218	51	64	65

15 Specificaties / Specifications			Afmetingen / Dimensions (mm)					
Artikel nummer	Capaciteit / Capacity	Gewicht / Weight	A	B	C	D	E	F
Article code	ton	kg						
YE.8.025.06	1.12	0.5	21	10	110	20	35	28
YE.8.025.20	12.50	7.0	65	27	275	55	80	86
YE.8.025.22	15.00	12.3	70	30	319	67	83	76
YE.8.025.26	21.20	20.0	80	34	362	75	106	96
YE.8.025.32	31.50	44.0	105	45	470	97	140	133



Grade 80 Toebehoren volgens EN 1677 / Grade 80 Accessories according to EN 1677

16. Veiligheids ooghaken
met grip /
Self-locking eye hooks
with grip



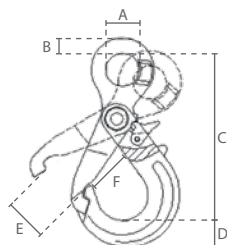
17. Veiligheids wartelhaken /
Self-locking swivel hooks
(Onbelast wartelen / Swivel without load)



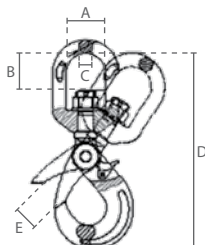
18. Veiligheids wartelhaken
met grip /
Self-locking swivel hooks
with grip
(Onbelast wartelen / Swivel without load)



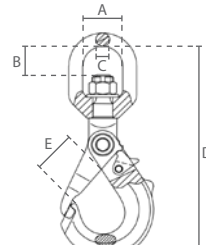
YE.8.025



YE.8.086



YE.8.086



16 Specificaties / Specifications			Afmetingen / Dimensions (mm)					
Artikel nummer	Capaciteit / Capacity	Gewicht / Weight	A	B	C	D	E	F
Article code	ton	kg						
YE.8.025.08	2.00	0.9	25	12	136	26	40	35
YE.8.025.10	3.15	1.6	35	14	168	30	50	45
YE.8.025.13	5.30	3.0	40	20	207	41	60	53
YE.8.025.16	8.00	5.9	50	26	254	51	65	64

17 Specificaties / Specifications			Afmetingen / Dimensions (mm)				
Artikel nummer	Capaciteit / Capacity	Gewicht / Weight	A	B	C	D	E
Article code	ton	kg					
YE.8.086.20	12.50	11.6	72	61	26	418	83
YE.8.086.22	15.00	16.0	95	95	33	527	88
YE.8.086.26	21.20	21.5	122	115	42	610	96
YE.8.086.32	31.50	79.0	140	126	52	777	150

18 Specificaties / Specifications			Afmetingen / Dimensions (mm)				
Artikel nummer	Capaciteit / Capacity	Gewicht / Weight	A	B	C	D	E
Article code	ton	kg					
YE.8.086.06	1.12	0.7	33	22	12	170	29
YE.8.086.08	2.00	1.1	36	26	13	210	34
YE.8.086.10	3.15	2.0	42	34	15	247	44
YE.8.086.13	5.30	4.0	50	39	16	302	52
YE.8.086.16	8.00	7.3	61	55	22	383	60



Grade 80 Toebehoren volgens EN 1677 / Grade 80 Accessories according to EN 1677

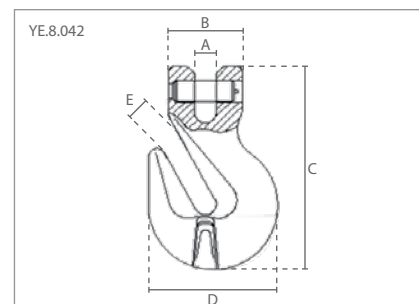
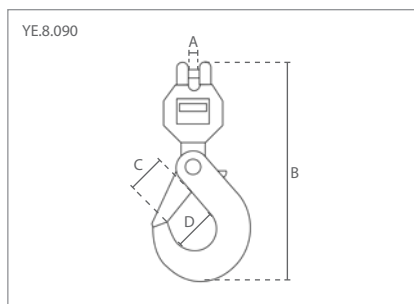
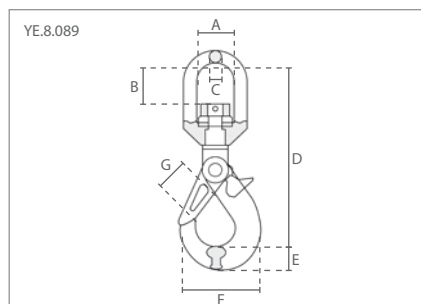
19. Veiligheids wartelhaken
met lager /
Self-locking swivel hooks
with bearing
(Belast wartelen / Swivel with load)



20. Veiligheids wartelhaken
met gaffel en lager /
Self-locking swivel hooks
with clevis and bearing
(Belast wartelen / Swivel with load)



21. Gaffel inkorthaken /
Clevis grab hooks



19 Specificaties / Specifications			Afmetingen / Dimensions (mm)						
Artikel nummer	Capaciteit / Capacity	Gewicht / Weight	A	B	C	D	E	F	G
Article code	ton	kg							
YE.8.089.06	1.12	0.7	33	35	12	165	19	70	27
YE.8.089.08	2.00	1.2	36	42	13	204	25	88	35
YE.8.089.10	3.15	2.0	42	50	16	241	27	108	44
YE.8.089.13	5.30	4.0	50	60	17	285	41	137	53
YE.8.089.16	8.00	7.3	61	65	22	351	49	166	60

20 Specificaties / Specifications			Afmetingen / Dimensions (mm)			
Artikel nummer	Capaciteit / Capacity	Gewicht / Weight	A	B	C	D
Article code	ton	kg				
YE.8.090.06	1.12	0.7	8	180	28	34
YE.8.090.08	2.00	1.3	10	228	34	46

21 Specificaties / Specifications			Afmetingen / Dimensions (mm)				
Artikel nummer	Capaciteit / Capacity	Gewicht / Weight	A	B	C	D	E
Article code	ton	kg					
YE.8.042.20	12.50	5.0	23	80	219	135	24



Grade 80 Toebehoren volgens EN 1677 / Grade 80 Accessories according to EN 1677

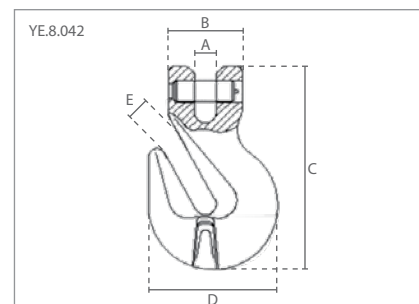
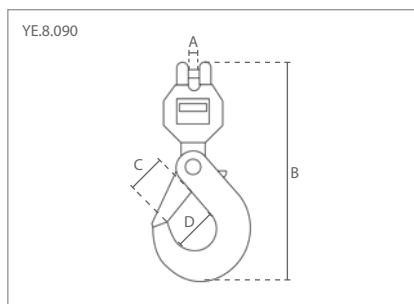
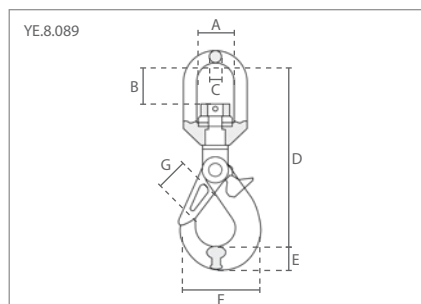
19. Veiligheids wartelhaken
met lager /
Self-locking swivel hooks
with bearing
(Belast wartelen / Swivel with load)



20. Veiligheids wartelhaken
met gaffel en lager /
Self-locking swivel hooks
with clevis and bearing
(Belast wartelen / Swivel with load)



21. Gaffel inkorthaken /
Clevis grab hooks



19 Specificaties / Specifications			Afmetingen / Dimensions (mm)						
Artikel nummer	Capaciteit / Capacity	Gewicht / Weight	A	B	C	D	E	F	G
Article code	ton	kg							
YE.8.089.06	1.12	0.7	33	35	12	165	19	70	27
YE.8.089.08	2.00	1.2	36	42	13	204	25	88	35
YE.8.089.10	3.15	2.0	42	50	16	241	27	108	44
YE.8.089.13	5.30	4.0	50	60	17	285	41	137	53
YE.8.089.16	8.00	7.3	61	65	22	351	49	166	60

20 Specificaties / Specifications			Afmetingen / Dimensions (mm)			
Artikel nummer	Capaciteit / Capacity	Gewicht / Weight	A	B	C	D
Article code	ton	kg				
YE.8.090.06	1.12	0.7	8	180	28	34
YE.8.090.08	2.00	1.3	10	228	34	46

21 Specificaties / Specifications			Afmetingen / Dimensions (mm)				
Artikel nummer	Capaciteit / Capacity	Gewicht / Weight	A	B	C	D	E
Article code	ton	kg					
YE.8.042.20	12.50	5.0	23	80	219	135	24



Grade 80 Toebehoren volgens EN 1677 / Grade 80 Accessories according to EN 1677

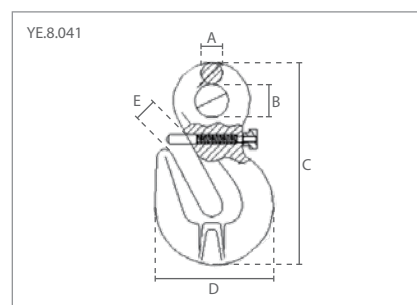
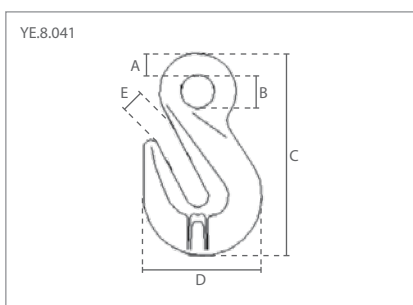
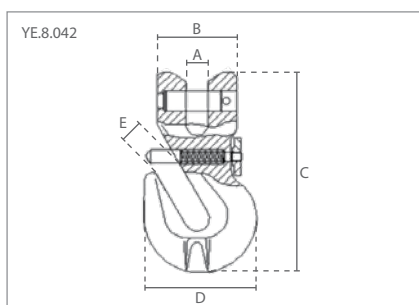
22. Gaffel inkorthaken
met veiligheidspin /
Clevis grab hooks
with safety pin



23. Oog inkorthaken /
Eye grab hooks



24. Oog inkorthaken
met veiligheidspin /
Eye grab hooks
with safety pin



22 Specificaties / Specifications			Afmetingen / Dimensions (mm)				
Artikel nummer	Capaciteit / Capacity	Gewicht / Weight	A	B	C	D	E
Article code	ton	kg					
YE.8.042.06	1.12	0.3	8	32	75	44	8
YE.8.042.08	2.00	0.4	10	35	89	50	11
YE.8.042.10	3.15	0.9	13	43	127	71	14
YE.8.042.13	5.30	1.9	15	63	164	90	17
YE.8.042.16	8.00	3.3	20	66	184	113	20

23 Specificaties / Specifications			Afmetingen / Dimensions (mm)				
Artikel nummer	Capaciteit / Capacity	Gewicht / Weight	A	B	C	D	E
Article code	ton	kg					
YE.8.041.06	1.12	0.2	6	14	76	44	8
YE.8.041.16	8.00	2.2	17	31	169	113	20
YE.8.041.20	12.50	4.6	23	38	219	143	25
YE.8.041.22	15.00	8.2	26	44	259	161	28
YE.8.041.26	21.20	9.8	32	44	298	171	30
YE.8.041.32	31.50	19.4	38	57	361	229	38

24 Specificaties / Specifications			Afmetingen / Dimensions (mm)				
Artikel nummer	Capaciteit / Capacity	Gewicht / Weight	A	B	C	D	E
Article code	ton	kg					
YE.8.041.08	2.00	0.3	10	17	89	50	11
YE.8.041.10	3.15	0.8	13	20	122	71	13
YE.8.041.13	5.30	1.6	16	26	158	96	17



Grade 80 Toebehoren volgens EN 1677 / Grade 80 Accessories according to EN 1677

25. Inkort klauwen /
Clevis chain clutches



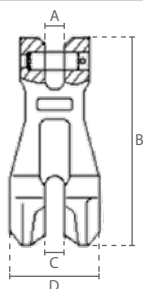
26. Inkort klauwen
met veiligheidspin /
Clevis chain clutches
with safety pin



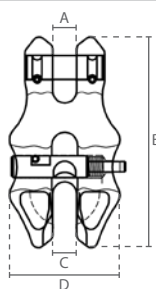
27. Gaffel gieterijhaken /
Clevis foundry hooks



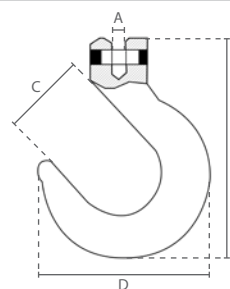
YE.8.093



YE.8.092



YE.8.048



25 Specificaties / Specifications			Afmetingen / Dimensions (mm)			
Artikel nummer	Capaciteit / Capacity	Gewicht / Weight	A	B	C	D
Article code	ton	kg				
YE.8.093.10	3.15	1.0	13	138	13	55
YE.8.093.13	5.30	2.0	17	177	17	75
YE.8.093.16	8.00	3.3	21	220	21	93

26 Specificaties / Specifications			Afmetingen / Dimensions (mm)			
Artikel nummer	Capaciteit / Capacity	Gewicht / Weight	A	B	C	D
Article code	ton	kg				
YE.8.092.06	1.12	0.2	8	73	8	38
YE.8.092.08	2.00	0.5	10	92	10	50
YE.8.092.10	3.15	0.8	13	115	13	60
YE.8.092.13	5.30	1.7	15	149	15	79
YE.8.092.16	8.00	3.9	19	184	19	98

27 Specificaties / Specifications			Afmetingen / Dimensions (mm)			
Artikel nummer	Capaciteit / Capacity	Gewicht / Weight	A	B	C	D
Article code	ton	kg				
YE.8.048.08	2.00	1.1	10	161	64	128
YE.8.048.10	3.15	2.5	13	199	77	156



Grade 80 Toebehoren volgens EN 1677 / Grade 80 Accessories according to EN 1677

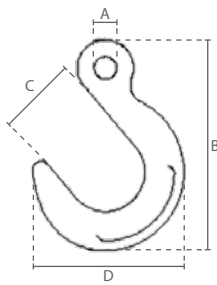
28. Oog gieterijhaken /
Eye foundry hooks

29. Gaffel bosbouwhaken /
Clevis forestry hooks

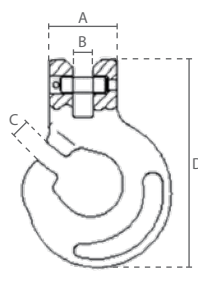
30. Gaffel hijsbandhaken
met klep /
Clevis webbing sling hooks
with latch



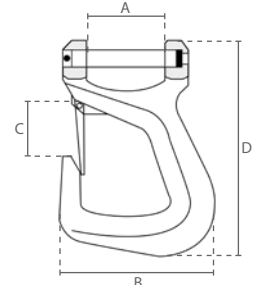
YE.8.047



YE.8.075



YE.8.013



28 Specificaties / Specifications			Afmetingen / Dimensions (mm)			
Artikel nummer	Capaciteit / Capacity	Gewicht / Weight	A	B	C	D
Article code	ton	kg				
YE.8.047.06	1.12	1.0	18	163	64	120
YE.8.047.08	2.00	1.1	18	163	64	120
YE.8.047.10	3.15	2.1	22	200	76	146
YE.8.047.13	5.30	3.2	27	238	89	171
YE.8.047.16	8.00	5.6	32	278	102	198
YE.8.047.20	12.50	8.8	38	325	115	232
YE.8.047.22	15.00	12.0	45	361	128	256
YE.8.047.26	21.20	17.0	68	402	140	283

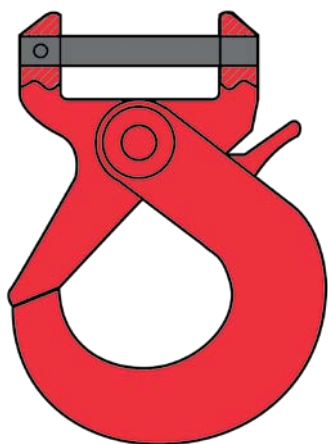
29 Specificaties / Specifications			Afmetingen / Dimensions (mm)			
Artikel nummer	Capaciteit / Capacity	Gewicht / Weight	A	B	C	D
Article code	ton	kg				
YE.8.075.08	2.00	0.5	35	10	11	96
YE.8.075.10	3.15	1.0	44	13	13	137
YE.8.075.13	5.30	1.8	53	15	16	165

30 Specificaties / Specifications			Afmetingen / Dimensions (mm)			
Artikel nummer	Capaciteit / Capacity	Gewicht / Weight	A	B	C	D
Article code	ton	kg				
YE.8.013.2.2	2.00	1.5	61	120	47	167



Grade 80 Toebehoren volgens EN 1677 / Grade 80 Accessories according to EN 1677

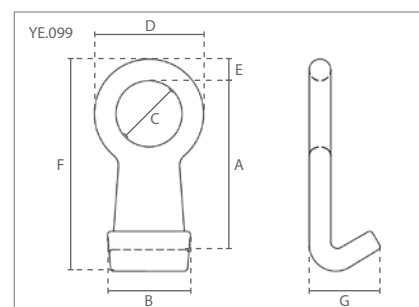
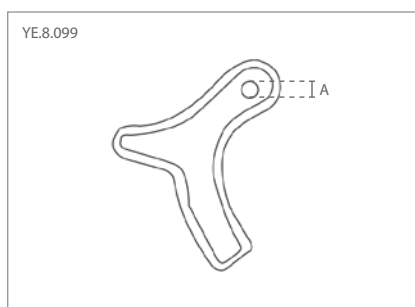
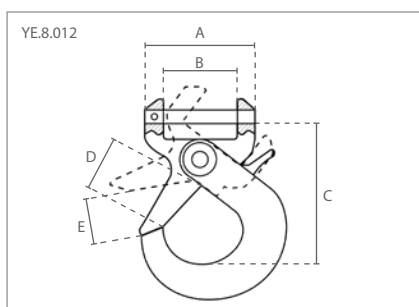
31. Veiligheids hijsbandhaken /
Self-locking webbing sling
hooks



32. Haken voor beton
ind. plaat /
Concrete hooks



33. Vathaken /
Barrel hooks



31 Specificaties / Specifications			Afmetingen / Dimensions (mm)				
Artikel nummer	Capaciteit / Capacity	Gewicht / Weight	A	B	C	D	E
Article code	ton	kg					
YE.8.012.2.2	2.20	1.9	98	65	130	50	26

32 Specificaties / Specifications			Afmetingen / Dimensions (mm)				
Artikel nummer	Capaciteit / Capacity	Gewicht / Weight	A				
Article code	ton	kg					
YE.8.099.01	1.80	2.1	20				

33 Specificaties / Specifications			Afmetingen / Dimensions (mm)						
Artikel nummer	Capaciteit / Capacity	Gewicht / Weight	A	B	C	D	E	F	G
Article code	ton	kg							
YE.099.01	1.00	0.7	109	60	39	65	14	118	59



Grade 80 Toebehoren volgens EN 1677 / Grade 80 Accessories according to EN 1677

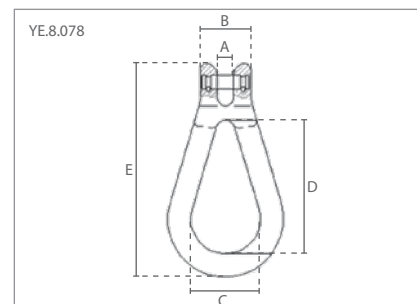
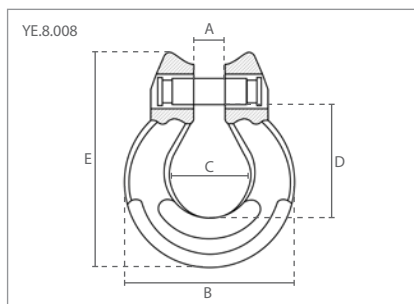
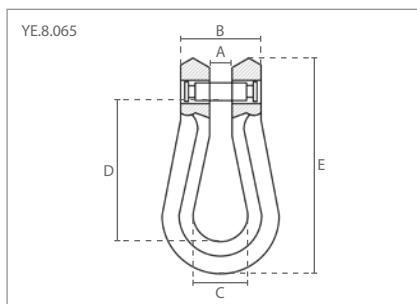
34. Peerschalmen /
Long shape omega
connecting links



35. Omega schalmen /
Omega connecting links



36. Peerschalmen met gaffel /
Clevis connecting links



34 Specificaties / Specifications			Afmetingen / Dimensions (mm)				
Artikel nummer	Capaciteit / Capacity	Gewicht / Weight					
Article code	ton	kg	A	B	C	D	E
YE.8.065.06	1.12	0.2	8	28	20	48	75
YE.8.065.08	2.00	0.2	10	33	25	59	92
YE.8.065.10	3.15	0.5	13	46	30	79	123
YE.8.065.13	5.30	1.0	15	58	46	94	154

35 Specificaties / Specifications			Afmetingen / Dimensions (mm)				
Artikel nummer	Capaciteit / Capacity	Gewicht / Weight					
Article code	ton	kg	A	B	C	D	E
YE.8.008.06	1.12	0.2	8	41	21	25	52
YE.8.008.08	2.00	0.2	10	52	24	35	69
YE.8.008.10	3.15	0.4	12	62	32	41	81
YE.8.008.13	5.30	0.7	15	81	41	54	108
YE.8.008.16	8.00	1.3	19	99	50	64	126

36 Specificaties / Specifications			Afmetingen / Dimensions (mm)				
Artikel nummer	Capaciteit / Capacity	Gewicht / Weight					
Article code	ton	kg	A	B	C	D	E
YE.8.078.08	2.00	0.6	10	33	45	87	139
YE.8.078.10	3.15	0.8	12	42	60	108	174
YE.8.078.13	5.30	1.8	17	56	67	138	228
YE.8.078.16	8.00	2.8	19	68	72	165	264