



## Sluitingen / Shackles

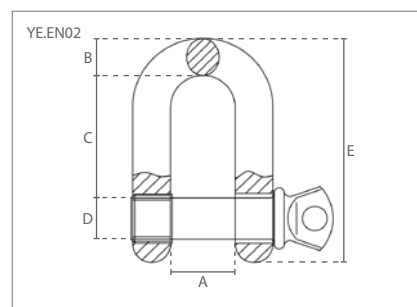
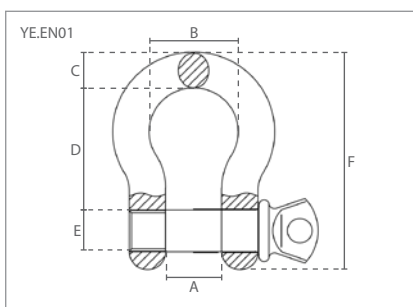
1. Harpsluitingen met borstbout / Screw pin anchor shackles
2. D-sluitingen met borstbout / Screw pin chain shackles

### Eigenschappen

- » Volgens EN 13889 en U.S. Fed Spec RR-C-271.
- » Gesmeed en thermisch verzinkt.
- » Gemarkeerd met: CE / DELTA / WLL / Batch / 6
- » Bedrijfstemperatuur: -20°C - +200°C
- » Geleverd met testcertificaat en CE-conformiteitsverklaring.

### Features

- » According to EN 13889 and U.S. Fed Spec RR-C-271.
- » Forged and hot-dip galvanized.
- » Marked with: CE / DELTA / WLL / Batch / 6
- » Operating temperature: -20°C - +200°C
- » Supplied with test certificate and CE declaration of conformity.



1 Specificaties / Specifications				Afmetingen / Dimensions (mm)					
Artikel nummer	Capaciteit / Capacity	MBL	Gewicht / Weight	A	B	C	D	E	F
Article code	ton	ton	kg						
YE.EN01.01	1.00	6.00	0.2	17	26	10	36	11	64
YE.EN01.01.5	1.50	9.00	0.2	19	26	12	42	13	74
YE.EN01.02	2.00	12.00	0.3	21	34	14	47	16	85
YE.EN01.03.25	3.25	19.5	0.7	27	43	16	60	19	107
YE.EN01.04.75	4.75	28.5	1.1	32	51	19	71	22	127
YE.EN01.06.50	6.50	39.00	1.7	37	58	23	83	25	148
YE.EN01.08.50	8.50	51.00	2.5	43	64	26	95	28	167
YE.EN01.09.50	9.50	57.00	3.8	46	74	30	100	32	190
YE.EN01.12	12.00	72.00	5.0	52	83	33	107	35	210
YE.EN01.13.5	13.50	81.00	6.1	57	92	36	122	38	233
YE.EN01.17	17.00	102.00	8.2	61	98	39	135	42	254
YE.EN01.25	25.00	150.00	16.9	74	126	47	145	51	314
YE.EN01.35	35.00	210.00	21.6	83	146	53	177	57	348
YE.EN01.55	55.00	330.00	38.9	105	184	80	266	71	453

2 Specificaties / Specifications				Afmetingen / Dimensions (mm)					
Artikel nummer	Capaciteit / Capacity	MBL	Gewicht / Weight	A	B	C	D	E	
Article code	ton	ton	kg						
YE.EN02.01	1.00	6.00	0.2	17	10	30	11	59	
YE.EN02.01.50	1.50	9.00	0.2	19	12	35	13	68	
YE.EN02.02.00	2.00	12.00	0.3	21	13	40	16	77	
YE.EN02.03.25	3.25	19.5	0.6	27	16	50	19	98	
YE.EN02.04.75	4.75	28.5	1.0	32	19	55	22	117	
YE.EN02.06.50	6.50	39.00	1.5	37	23	70	25	135	
YE.EN02.08.50	8.50	51.00	2.2	43	26	80	28	153	
YE.EN02.09.50	9.50	57.00	3.2	46	29	90	32	172	
YE.EN02.12	12.00	72.00	4.5	52	33	100	35	191	
YE.EN02.13.5	13.50	81.00	5.6	57	36	110	38	207	
YE.EN02.17	17.00	102.00	7.3	61	38	120	42	230	
YE.EN02.25	25.00	150.00	13.2	74	45	145	51	279	
YE.EN02.35	35.00	210.00	20.2	83	53	170	57	325	
YE.EN02.55	55.00	330.00	31.5	105	63	200	68	365	



## Sluitingen / Shackles

### 3. Harpsluitingen met moerbout / Bolt type anchor shackles

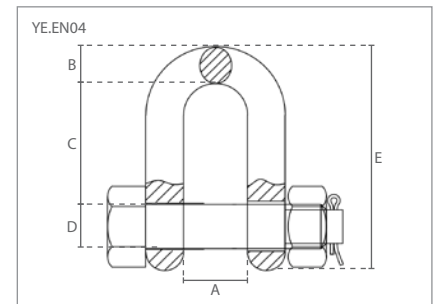
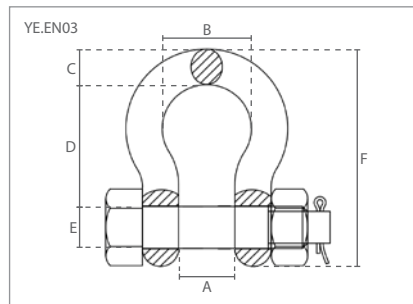
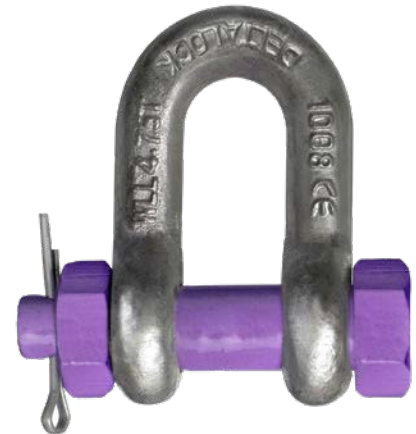
### 4. D-sluitingen met moerbout / Bolt type chain shackles

#### Eigenschappen

- » Volgens EN 13889 en U.S. Fed Spec RR-C-271.
- » Gesmeed en thermisch verzinkt.
- » Gemarkeerd met: CE / DELTA / WLL / Batch / 6
- » Bedrijfstemperatuur: -20°C - +200°C
- » Geleverd met testcertificaat en CE-conformiteitsverklaring.

#### Features

- » According to EN 13889 and U.S. Fed Spec RR-C-271.
- » Forged and hot-dip galvanized.
- » Marked with: CE / DELTA / WLL / Batch / 6
- » Operating temperature: -20°C - +200°C
- » Supplied with test certificate and CE declaration of conformity.



3 Specificaties / Specifications				Afmetingen / Dimensions (mm)					
Artikel nummer	Capaciteit / Capacity	MBL	Gewicht / Weight	A	B	C	D	E	F
Article code	ton	ton	kg						
YE.EN03.001	1.00	6.00	0.2	17	26	10	36	11	64
YE.EN03.001.5	1.50	9.00	0.2	19	30	12	42	13	74
YE.EN03.002	2.00	12.00	0.4	21	34	14	47	16	85
YE.EN03.003.25	3.25	19.5	0.7	27	43	18	60	19	107
YE.EN03.004.75	4.75	28.5	1.2	32	51	21	71	22	127
YE.EN03.006.5	6.50	39.00	1.8	37	58	25	83	25	148
YE.EN03.008.5	8.50	51.00	2.7	43	69	27	95	28	167
YE.EN03.009.5	9.50	57.00	3.9	46	74	32	107	32	190
YE.EN03.012	12.00	72.00	5.7	52	83	35	122	35	210
YE.EN03.013.5	13.50	81.00	6.9	57	92	36	135	38	233
YE.EN03.017	17.00	102.00	8.9	61	98	41	145	42	254
YE.EN03.025	25.00	150.00	18	74	126	58	177	51	314
YE.EN03.035	35.00	210.00	25	83	146	61	195	57	348
YE.EN03.055	55.00	330.00	45	125	180	78	263	70	450
YE.EN03.085	85.00	510.00	69	140	195	80	320	82	545

4 Specificaties / Specifications				Afmetingen / Dimensions (mm)				
Artikel nummer	Capaciteit / Capacity	MBL	Gewicht / Weight	A	B	C	D	E
Article code	ton	ton	kg					
YE.EN04.001	1.00	6.00	0.2	17	10	30	11	59
YE.EN04.001.5	1.50	9.00	0.2	19	12	35	13	68
YE.EN04.002	2.00	12.00	0.3	21	13	40	16	77
YE.EN04.003.25	3.25	19.5	0.7	27	18	50	19	98
YE.EN04.004.75	4.75	28.5	1.1	32	21	55	22	117
YE.EN04.006.5	6.50	39.00	1.7	37	25	70	25	136
YE.EN04.008.5	8.50	51.00	2.4	43	27	80	28	153
YE.EN04.009.5	9.50	57.00	3.6	46	32	90	32	173
YE.EN04.012	12.00	72.00	5.0	52	35	100	35	191
YE.EN04.013.5	13.50	81.00	6.4	57	35	110	38	207
YE.EN04.017	17.00	102.00	8.1	61	41	120	42	230
YE.EN04.025	25.00	150.00	15.4	74	54	145	51	279
YE.EN04.035	35.00	210.00	22.9	83	61	170	57	325
YE.EN04.055	55.00	330.00						